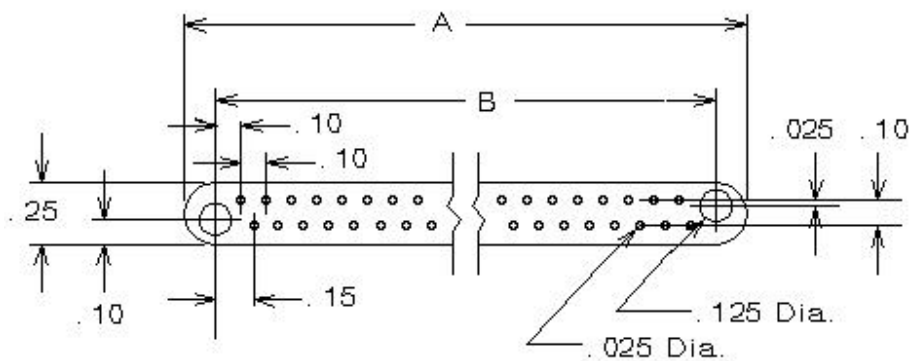
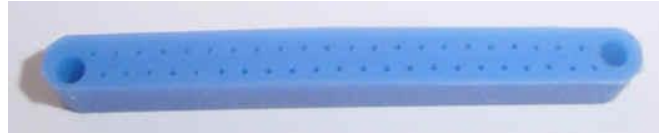


KINNARNEY RUBBER COMPANY

Masking Boots for the Electronics Industry

Mil-Style (K-300 Series) Masking Boot Specifications



Part #	A	B	# of Pins
K-315	3.65	3.45	66
K-316	3.15	2.95	56
K-317	1.35	1.15	20
K-318	2.55	2.35	44
K-319	1.55	1.35	24
K-320	1.85	1.65	30
K-321	0.85	0.65	10
K-331	2.15	1.95	36
K-332	2.35	2.15	40
K-333	3.35	3.15	60
K-334	1.65	1.45	26
K-335	3.85	3.65	70
K-336	6.65	6.45	120
K-337	2.85	2.65	50
K-338	1.05	0.85	14
K-390	5.65	5.45	100